

---

January 2012 Release

**Xzbitware  
Installation and SetUp Instructions**

**System Requirements:** Same as those required for AutoCAD® 2010-2012. The operating system can be 32 or 64 bit Windows XP, VISTA, or Windows 7. There is a 32 bit and a 64 bit version of Xzbitware. The 64 bit version is recommended since it gives access to much more memory than the 32 bit one. Also, AutoCAD 2012, in particular, has been optimized to perform better as a 64 bit application. A 64 bit AutoCAD will only work with 64 bit Xzbitware.

The most current version of Xzbitware works with AutoCAD® 2010 through 2012. The annual maintenance and support fee for Xzbitware includes the cost for upgrading to newer versions of AutoCAD® when they become available.

**Product Updates:** Updates to this product, along with technical support, are provided at no extra cost beyond a license fee during the 12 months immediately following purchase. Thereafter, there is a modest annual fee charged for product support and program upgrades. Note that failure to regularly renew an annual product support and upgrade subscription may result in higher fees when finally renewing a subscription. This is a common practice of most software companies including Autodesk®.

**Extra Documentation:** There are PDF files included in the **XZWare** program Installation Folder for review and printing hard copy using Acrobat® Reader.

**NOTE:** For those with Operating Systems that include "User Account Control" settings This (UAC) is found on workstations that use VISTA and Windows 7, for example. After running the installation program but **before setting up AutoCAD and Xzbitware from inside AutoCAD**, the user must **turn OFF** the "User Account Control". This is done through the "Control Panel-Security Settings panel". After all setup is complete, the user should exit AutoCAD and turn the "User Account Control" back **ON** to whatever level of security protection is felt necessary. Failure to turn the UAC OFF **before doing setup procedures from inside AutoCAD**, will prevent certain critical setup steps from being completed and you will get an error message confirming setup failure.

**First, make sure that AutoCAD is NOT running.** For Trial copy users, unzip the downloaded zip file that was selected from the choices on the web site download page. The file inside is a program installer file with an extension of “.exe”.

Once the installer file is unzipped, using Windows Explorer, double-click on the file name. The installation program should begin automatically. For users with a program CD, simply load the CD into a CD drive and the installation program should start within a few seconds after being loaded (if Autoload is turned ON—the default).

You will be prompted to select a Drive and Path for the program files. We strongly recommend that you use the default file Folder name, **XZWare**, and default Drive, **C**, unless Drive C does not have enough room available. You will need approximately 28 Mbytes of space to hold the program files, a pre-built AGAM, Alusett, or Octanorm Parts Symbol Library, and supporting Data Tables. These are provided to help new users get started quickly. Users may create their own symbols at any time and remove the ones they no longer need. Also, many users do not even use a “Library” of parts. They let Xzbitware help create parts as they are needed when creating an exhibit drawing. This is done through the *Custom Metal, AutoRail, Custom Panel, AutoWall, AutoFabricFrame, AutoPanel, Custom Structure*, and other part creation tools available in Xzbitware.

The pre-built Symbol Library as well as the supporting Data Tables may be deleted after you have set up your own Symbol Library and Data Tables. An empty set of Data Tables may be included in the installation so that you may create your own records “from-scratch” and your own Parts Symbol Library (or libraries) whenever you are ready to do so.

Typically, it takes less than a minute for the installation program to transfer all of the files from the installation program onto the User's Workstation. As soon as the "Finish" button is pushed at the end of the installation process, the program installer window will close.

Note that, during the install process, a default Library folder (“<drive>:\XZWare\Library”) of CAD Part Symbols is placed on the user's workstation.

All of these symbols were created to work with Xzbitware. This Library may be moved elsewhere if the user needs to relocate it. One reason for moving it might be to place the Library on a File Server so that it can be shared with other users. This is a common practice. Still, as mentioned above, many users simply create parts “on-the-fly” as they need them and rarely use parts from a symbol library.

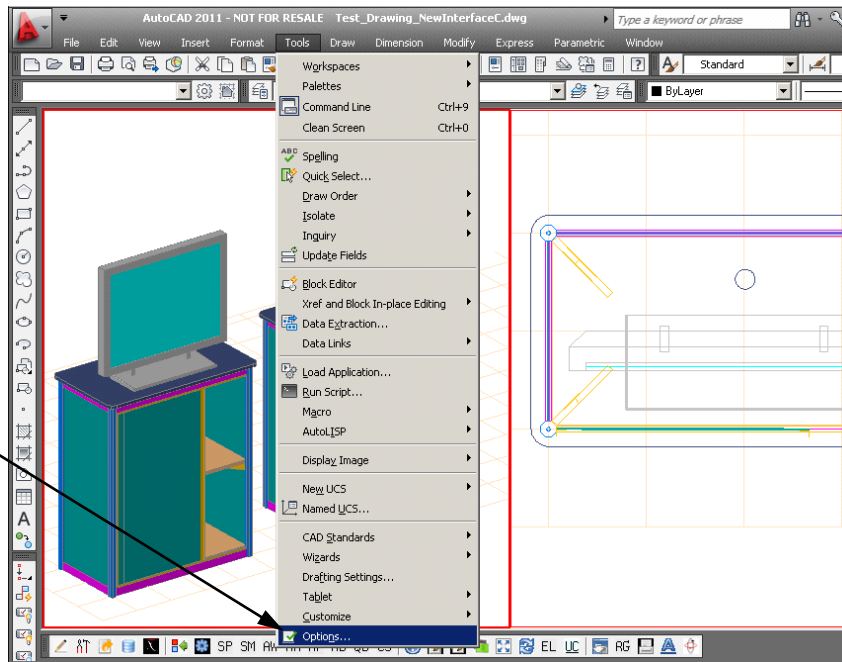
Please contact MALEKKO for advice if you want to relocate the Library. The Symbol Library was included so that new users, who wanted to work from a pre-built parts library, would be able to begin creating an exhibit drawing shortly after program installation. That is, we wanted to eliminate the need for new users to first create a working library of parts “from-scratch” just to learn how to use Xzbitware.

**SETTING UP THE SYSTEM FROM INSIDE AUTOCAD®**

It is assumed at this point that Xzibitware was installed successfully on the user’s workstation. The next step is to prepare AutoCAD to automatically locate and load the primary control file for Xzibitware. That file is called XZWare.fas.

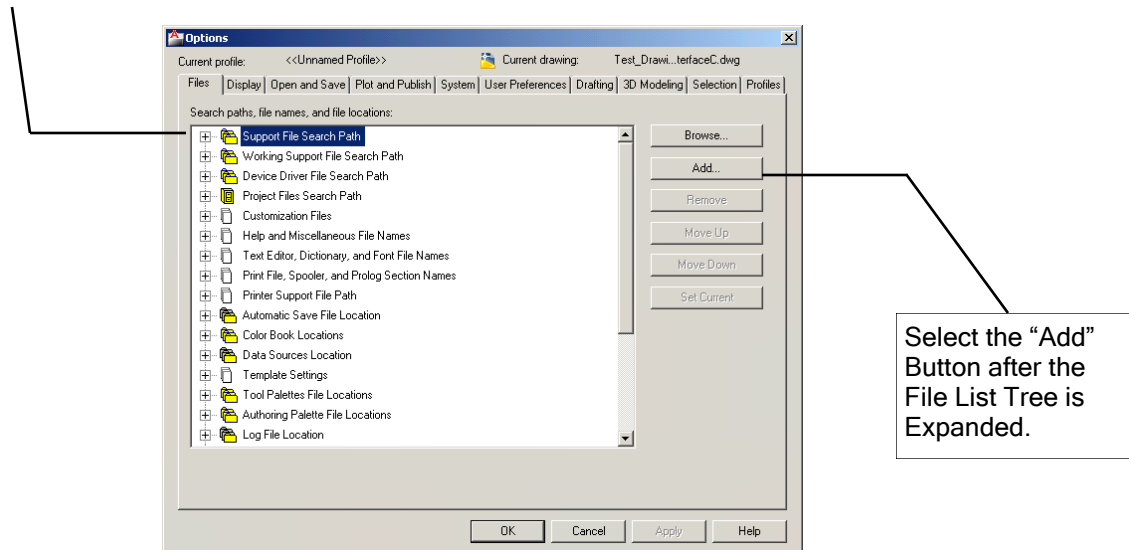
- a. The user should start the AutoCAD® CAD program. Once AutoCAD® is loaded, select the “Tools” menu bar label to activate its drop-down Menu.

b.  
From the drop-down  
Menu, select the  
“Options...” label.



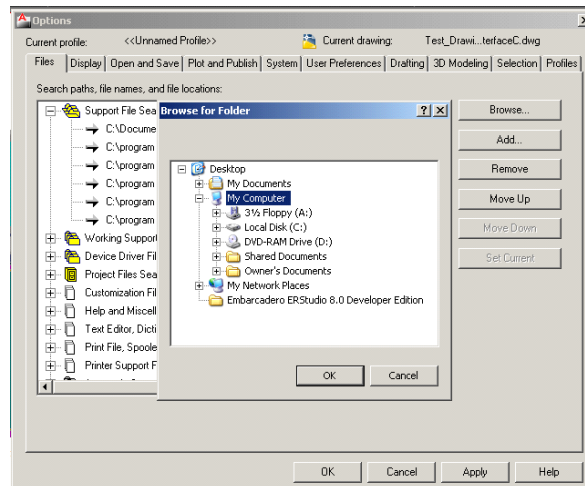
## SETTING UP THE SYSTEM FROM INSIDE AUTOCAD® ...continued

- c. **Options Window:** Select the Tab labeled “Files” (the first tab). This is for setting various file options. A new search Path needs to be added to the “Support File Search Path”.
- d. Select “+” next to the “Support File Search Path” label to expand this File List tree. This will display all of the paths AutoCAD® currently searches when looking for a file.



- e. Even if this is an upgrade from an earlier system, a new path may need to be added to those already present. From the "Options" dialogue window, select the control button labeled "Add" to add a new path if C:\XZWare is not already set up. An empty support path will be displayed at the bottom of the file tree. Type in the path to the XZWare Folder or use the "Browse" button to find this Folder on the workstation.

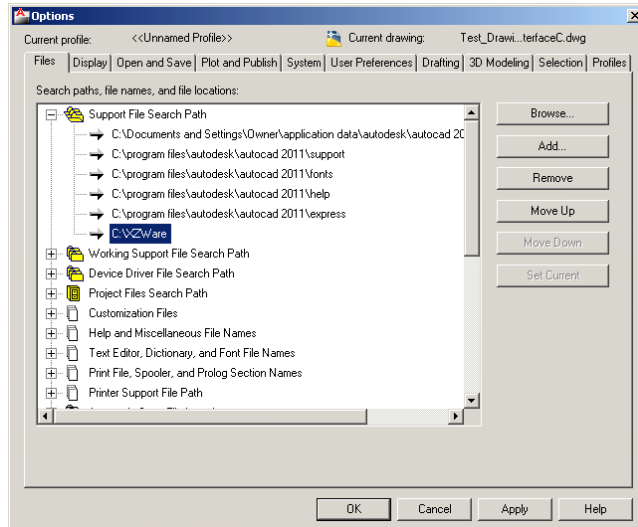
Adding a new search path using the “Add” button and “Browse” window.



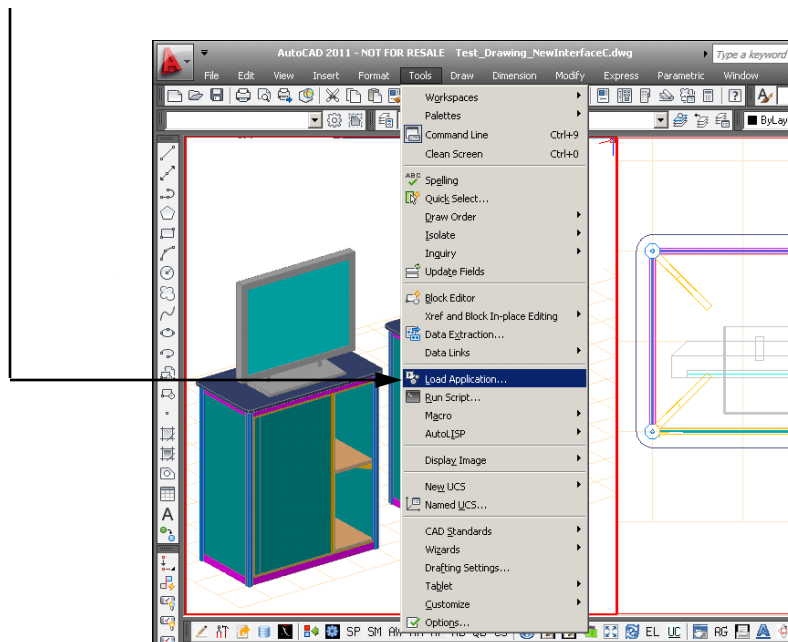
Use the file Explorer-style Browse window to locate the search path to the XZWare Folder on the user’s workstation. This support path is needed so that AutoCAD can help Xzbitware locate the main control folder, its sub-folders, run-time tables, and support files.

SETTING UP THE SYSTEM FROM INSIDE AUTOCAD® ...continued

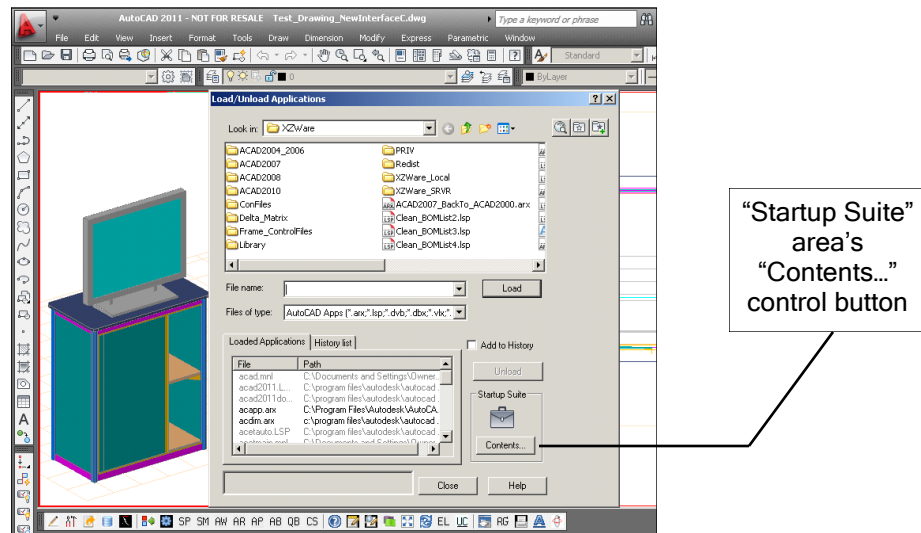
The new search path appears in the File List Tree. Press "Apply" to store this entry.



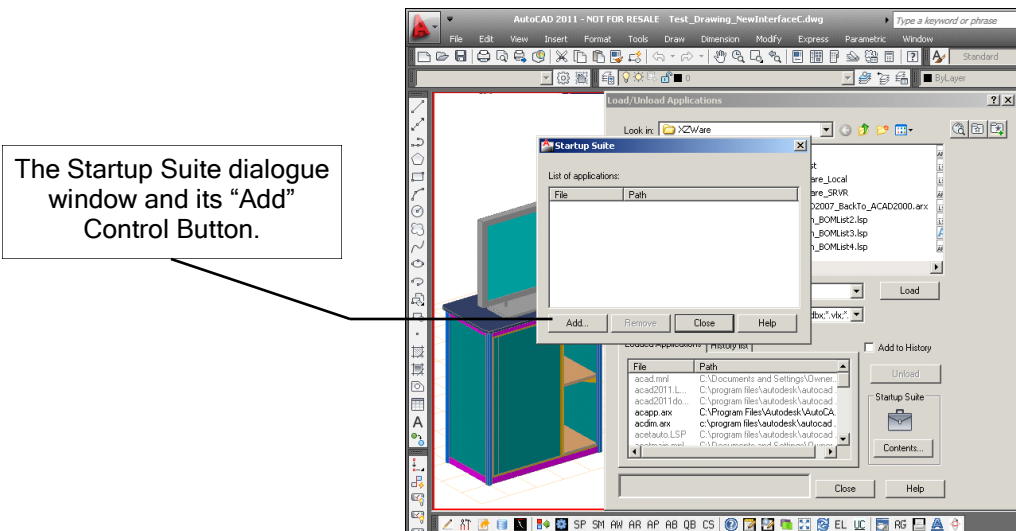
- f. Once this new path is displayed in the support file tree, select the control button labeled "Apply" so the path will become a permanent member of the Support File Search Paths.
- g. Then select the control button labeled "OK" to close the "Options" dialogue window.
- h. Select the "Tools" menu label again from the windows menu bar inside AutoCAD®.
- i. From the drop-down menu that appears, select the "Load Application..." label near the middle of the menu. This makes a dialogue window appear that is labeled "Load/Unload Applications". The goal of this step is to make an Xzibitware program module load automatically when the user starts AutoCAD® to begin working on drawings.
- j.
- k.



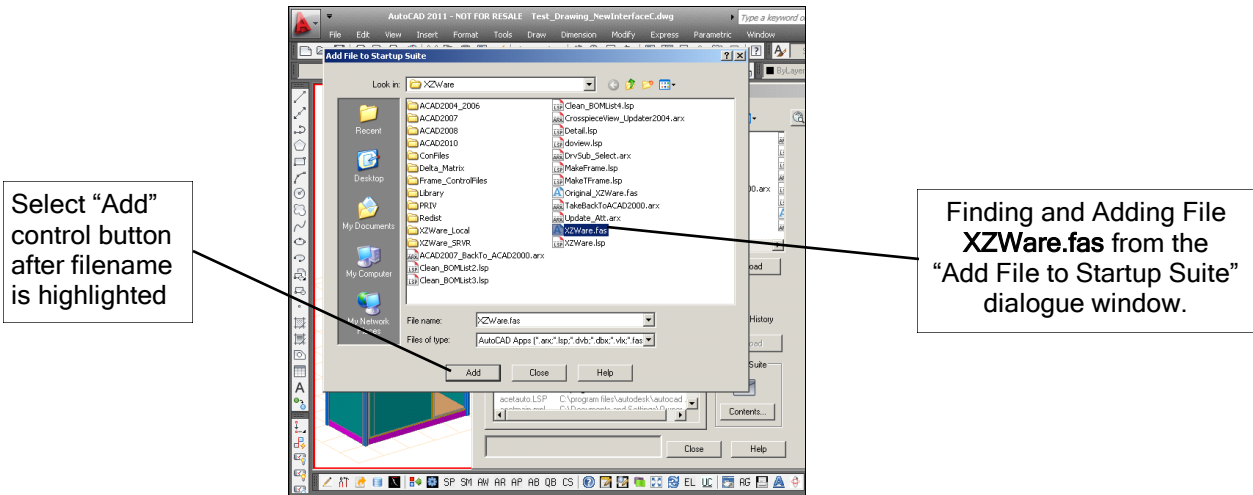
## SETTING UP THE SYSTEM FROM INSIDE AUTOCAD® ...continued



- j. Contained in this dialogue window is an area labeled "Startup Suite" and within this area is a control button labeled "Contents...". Select this button.
- k. Another dialogue window appears. This one is labeled "Startup Suite". From this new dialogue window, select the control button labeled "Add" since you are trying to add a new program for AutoCAD® to automatically load on startup.



SETTING UP THE SYSTEM FROM INSIDE AUTOCAD® ...continued

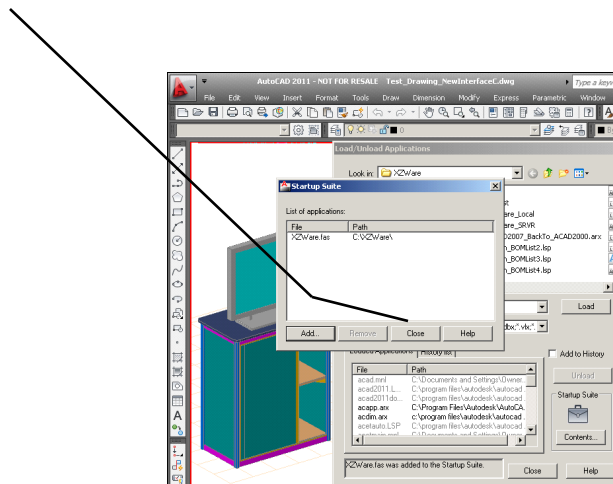


- l. Another dialogue window appears in front of the "Startup Suite" dialogue. It is labeled "Add File to Startup Suite" and it contains an Explorer-style browse window that makes file selection easy. The appropriate "Files of type:" selection for the list box near the bottom of the window is "AutoCAD Apps (\*.arx,\*.lsp,\*.dwb,\*.fas)" since you are going to add a file called "XZWare.fas". It is contained in the default Folder, XZWare (unless the default folder name was changed during installation).

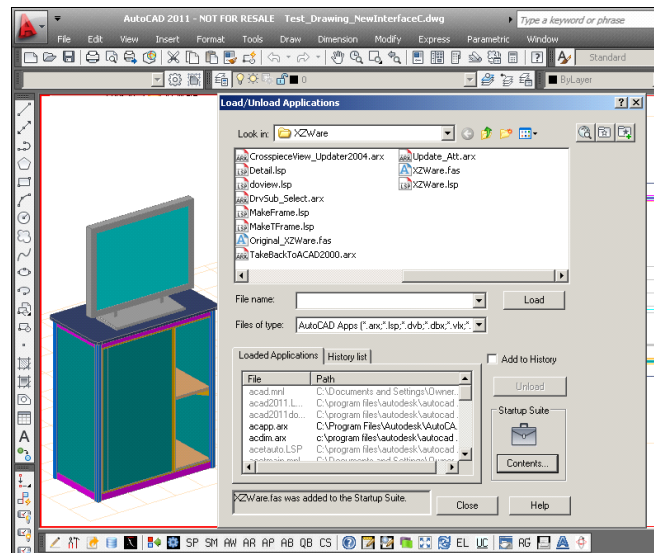
After selecting the XZWare Folder, type in the filename "XZWare.fas" in the "File Name:" edit box or use the file selection controls to locate and select this file (recommended).

- m. Once the filename, "XZWare.fas", appears in the "File Name:" edit box, press the "Add" control button. The "Add File to Startup Suite" dialogue window will close automatically. The "Startup Suite" list box should now contain the filename, "XZWare.fas", and the path to the XZWare Folder (unless default folder name was changed during installation).

- n. Press the "Close" control button on the "Startup Suite" dialogue window.



## SETTING UP THE SYSTEM FROM INSIDE AUTOCAD® ...continued



After the "Startup Suite" dialogue window closes, in the lower left-hand corner of the "Load/Unload Applications" window that remains in view will be a status message indicating "XZWare.fas was added to the Startup Suite." This information is also confirmed in the Command/Status area of the AutoCAD® Drawing Editor window.

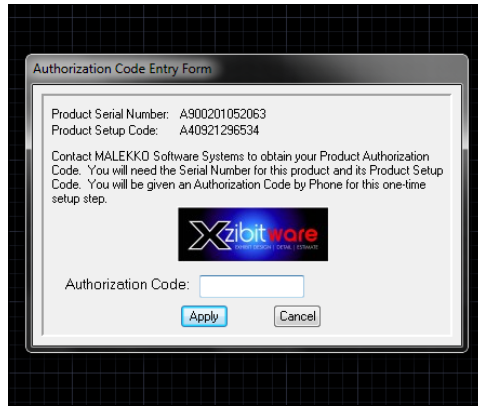
- o. Press the "Close" control button on the "Load/Unload Applications" window. **Exit AutoCAD and then restart it again.** After it starts, press the F2 button. You should see a message that may have scrolled upward in the Command/Status area of the AutoCAD Drawing Editor window during startup. See an example in the figure below. This message will confirm that Xzbitware now loads automatically at startup.

```
Command:
AutoCAD menu utilities loaded.
Loading The Exhibit Design Data Extraction Module by MALEKKO
for use only with AutoCAD Version 2010, 2011, and 2012...
...loaded
```

**MAKE SURE THE Windows® "User Account Control" IS TURNED OFF at this point.**

- p. From the keyboard, type the command "XT". This will serve three (3) purposes:
- 1) It will confirm that the software has been installed correctly on the user's workstation so that AutoCAD® can load and run it. The user can always start Xzbitware by typing in the "XT" command or from the Xzbitware ToolBar once it has been set up.
  - 2) It will allow the person installing the software module to obtain an Authorization Code to permit the use of the software module. **Note: TRIAL versions of Xzbitware do not require an Authorization Code** to enable running, only regular, non-TRIAL, versions.
  - 3) It will allow additional required setup information to be entered by the person doing the software installation. Almost all of this additional information is not needed for the TRIAL version of Xzbitware. It is supplied automatically but can be changed as needed.

SETTING UP THE SYSTEM FROM INSIDE AUTOCAD® ...continued



- q. **For Non-Trial Users only:** After the "XT" command is entered, a dialogue window entitled "Authorization Code Entry" should appear inside the AutoCAD® Drawing Editor window. It will contain two (2) key items of information that are needed to obtain an Authorization Code. They are the Product Serial Number and the Product Setup Code. Without an Authorization Code, the software module will not be allowed to run from inside AutoCAD®.

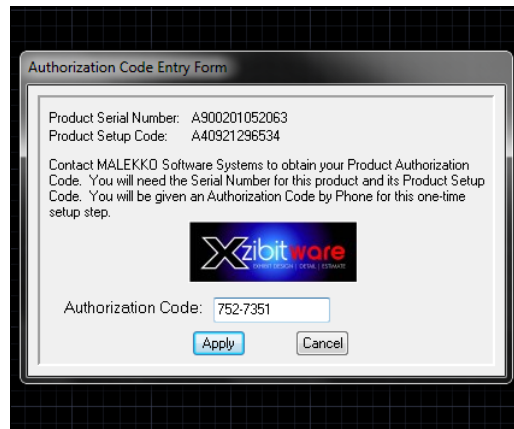
MALEKKO Software Systems must be contacted (1-770-314-7199) to obtain this product Authorization Code.

This step is a one-time operation that should never have to be repeated. After providing the Product Serial Number and Product Setup Code, the person doing the installation will be given an Authorization Code to enter into an edit box in the "Authorization Code Entry" dialogue window. This code must match EXACTLY with the number given to the person doing the installation. **DO NOT close this window until you have requested/entered a code.**

To complete the process, the "Apply" control button must be pushed. This will cause the code to be checked by the internal control logic to ensure that it is a valid code and it will close the window automatically. If the code entered is incorrect, an error message window will appear informing the user of this fact. Pressing "Cancel" to skip entering an Authorization Code will make another error message window appear. In either of these cases, the use of the software module will be blocked until the code is accepted.

An Authorization Code provided by MALEKKO Software Systems has been entered into the edit box.

The user presses the "Apply" control button to complete the process.



## SETTING UP THE SYSTEM FROM INSIDE AUTOCAD® ...continued

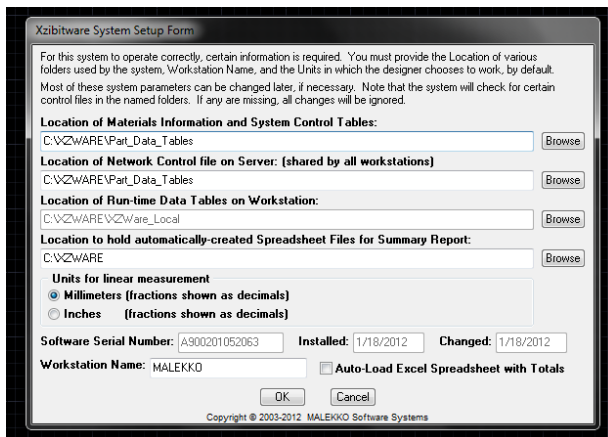


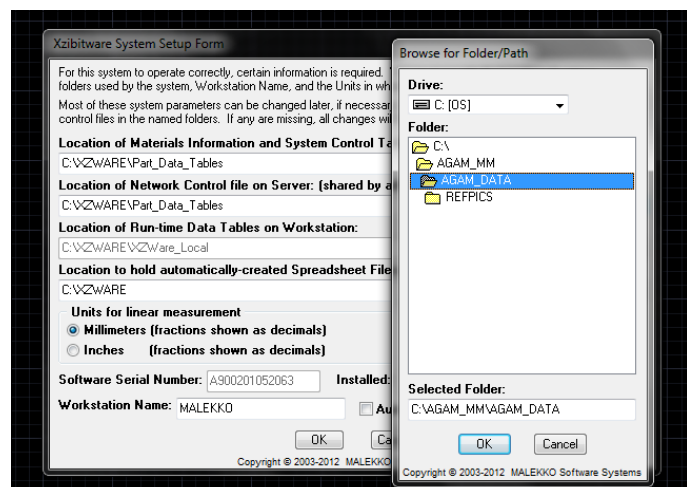
Figure A

If the Authorization Code is accepted, another dialogue window appears. It is entitled: "Xzbitware System Setup Form". The form, seen in Figure A above, appears this way for both the TRIAL and regular versions of Xzbitware. The user will probably want to change the default Workstation name to something more meaningful than "MALEKKO".

Several edit boxes are provided on this form to allow the person doing the installation to specify major table and control file paths or locations within the system. There are four (4) edit boxes provided to hold this information. Each one also contains a "Browse" control button to make it easier to specify path information. An entry is mandatory for each one of these edit boxes.

The first edit box holds the location of the Materials Information and System Control tables. These most commonly reside on a File Server so that they can be accessed and shared by multiple users. Some of the tables that reside in this path are tables such as Acc.adt (for accessory parts), Metal.adt (for metal parts), NonMetal.adt (for panels), as well as Exhibit\_Info.adt (for exhibit Project information) and related support files. For single workstation setups, all of these tables will usually be in a Folder on the user's CAD workstation, not on a File Server.

Using an Explorer-style "Browse" window to locate the path where materials information and control tables reside.



## SETTING UP THE SYSTEM FROM INSIDE AUTOCAD® ...continued

Edit Box 1 is shown loaded with the path that ends in “Part\_Data\_Tables”. This folder is located just below the default installation folder. The full path will be automatically checked for the presence of all required shared system Data Tables when the “OK” control button is finally selected.

The other three (3) edit boxes used for specifying locations are described below.

Xzibitware System Setup Form

For this system to operate correctly, certain information is required. You must provide the Location of various folders used by the system, Workstation Name, and the Units in which the designer chooses to work, by default. Most of these system parameters can be changed later, if necessary. Note that the system will check for certain control files in the named folders. If any are missing, all changes will be ignored.

**Location of Materials Information and System Control Tables:**

**Location of Network Control file on Server: (shared by all workstations)**

**Location of Run-time Data Tables on Workstation:**

**Location to hold automatically-created Spreadsheet Files for Summary Report:**

**Units for linear measurement**  
 Millimeters (fractions shown as decimals)  
 Inches (fractions shown as decimals)

Software Serial Number:  Installed:  Changed:

Workstation Name:   Auto-Load Excel Spreadsheet with Totals

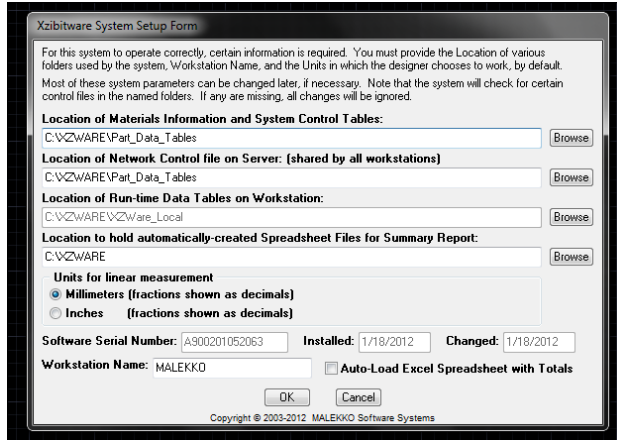
Copyright © 2003-2012 MALEKKO Software Systems

Edit Box 2, although no longer used by the latest version of Xzibitware, must contain an entry. This edit box will be removed in the next software release or may be given a new use.

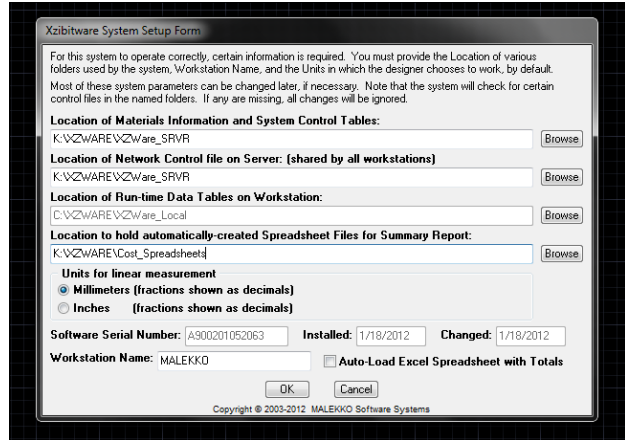
Edit Box 3 holds the location of run-time data tables that reside only on a user's workstation. These tables are never shared with other users. As a reference, this Folder should contain the files: ArtPanel.adt, FTAcc.adt, FTmet.adt, and so on. The Folder that holds these files is called **XZWare\_Local** and is located just below the **XZWare** Folder. The entry for this edit box is automatically provided as a reference for the user and should never be changed without detailed instructions from MALEKKO Software Systems.

Edit Box 4 holds the location of automatically-created Excel Spreadsheet files that take their name from the current drawing being edited with the filename extension being made "XLS". This edit box lets the user specify where to create and maintain these files. Excel File creation is modeled after the two file templates, ExtractPricingTemplate.xls and DwgDataToExcelWbk\_Template.xls that are provided as part of Xzibitware. Neither template file should be rearranged by the user without first consulting MALEKKO Software Systems for special instructions on how to do this. Supported versions of Excel: Office 2003-Office 2010.

SETTING UP THE SYSTEM FROM INSIDE AUTOCAD® ...continued



Completed Setup Form for a single-user system (only one CAD workstation).



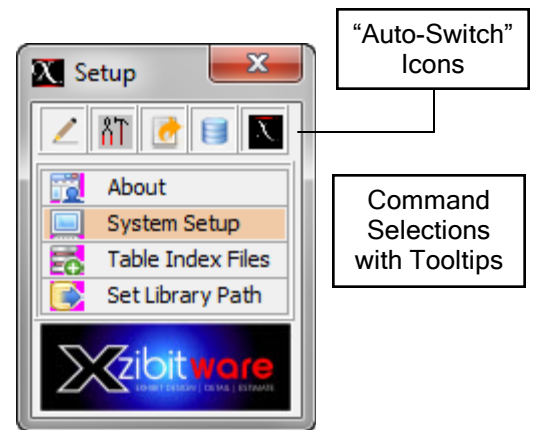
Completed Setup Form for a typical multi-user networked system.

Note the check box shown for identifying units for measurements. The software needs this information when dealing with material sizes and areas to arrive at material cost, labor time, and weight estimates. By default, the Units are assumed to be Metric (mm). The Workstation Name entry is mandatory. This entry can be simply the user's name or initials.

When the "OK" button is selected at the bottom of the Setup Form, the module automatically verifies that the specified locations contain relevant tables and support files and that their properties are not Read-Only so that the system can write information out to tables as required from time to time. All edit boxes are also checked to make sure that they are not empty. The user may return to this Setup Form at any time to change Path information or Units. This is done by selecting the "System Setup" Button located on Xzbitware's "Setup" Menu Bar.

When the System Setup Form closes, the "Setup" Menu Bar for Xzbitware appears inside AutoCAD® (see the figure to the right). Pressing the Escape button or the "X" button will close this window. At this point, Xzbitware is ready to use.

We recommend that you also add the Xzbitware Toolbar to your AutoCAD installation. This toolbar contains the most commonly used Xzbitware commands. It also interfaces with the modeless Menu Bars that are an optional interface for users. Each Menu Bar includes Tooltips to help identify commands. We have included a PDF file in the XZWare folder that shows step-by-step how to add the Xzbitware Toolbar to the user's workstation.

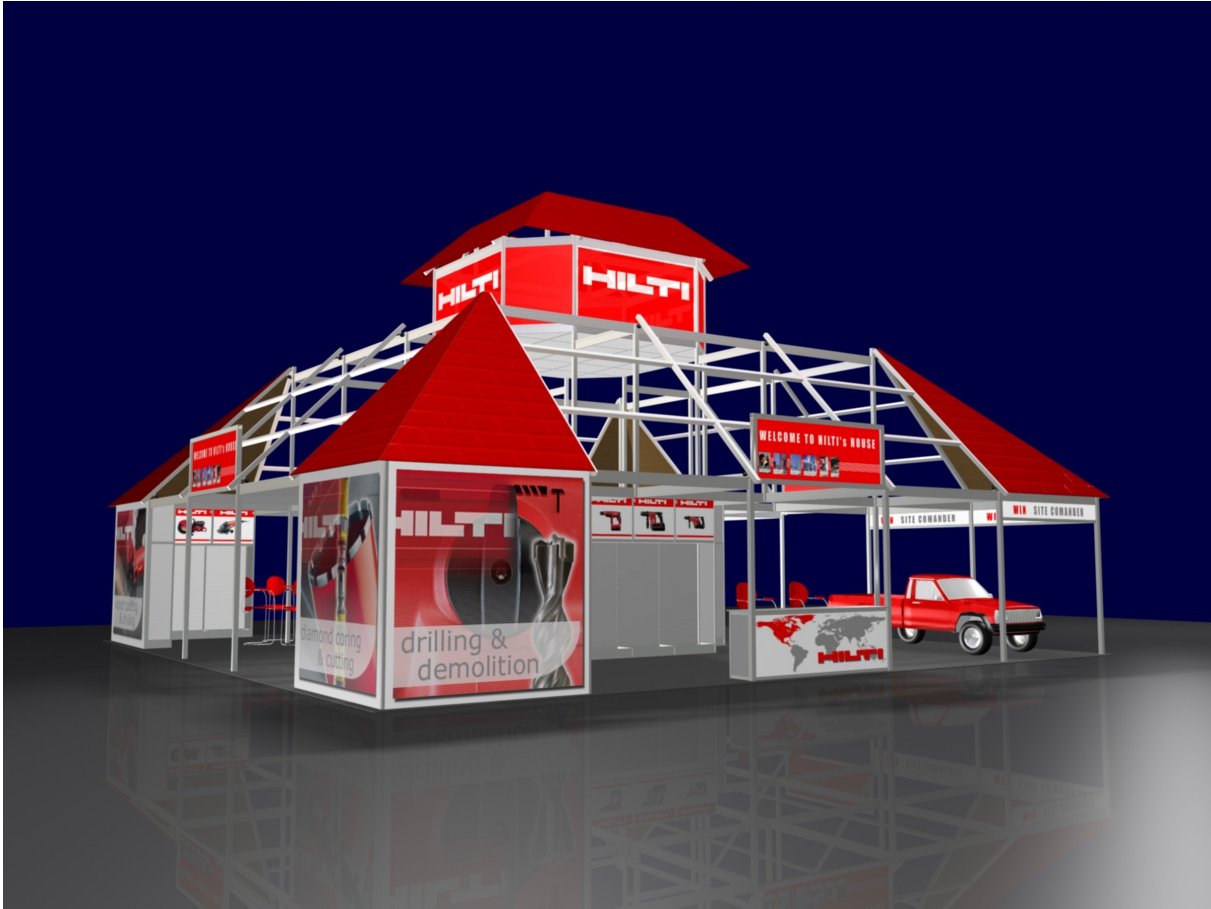


Xzbitware Toolbar



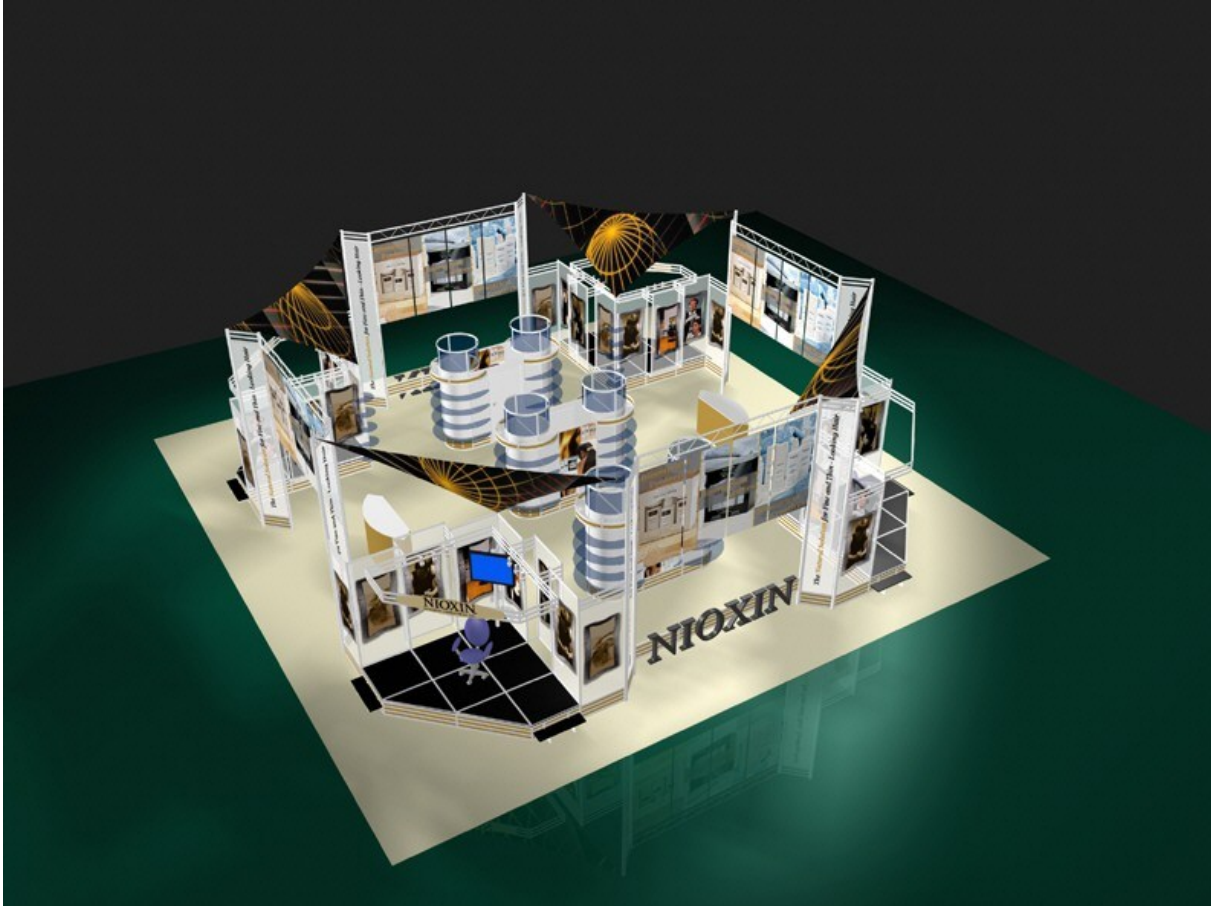
END OF INSTALLATION AND SYSTEM MODULE SETUP INSTRUCTIONS

Sample Drawing



Drawn using Xzibitware Drawing courtesy of Alex Shtylman Alviro Consulting, LLC

Sample Drawing



Drawn using Xzibitware Drawing courtesy of Alex Shtylman Alviro Consulting, LLC